

The Countryside Code

Respect • Protect • Enjoy

Always follow the Countryside Code
www.gov.uk/government/publications/the-countryside-code



Types of paths

It is important to recognise the difference between paths in the countryside. Many paths do not have markers so it is advisable that you use an O.S. map or equivalent and understand the key.



Public footpaths

are marked with yellow arrows. Walkers on foot only can use footpaths.



Bridleways

are marked with blue arrows. Walkers, horse riders and cyclists can use bridleways.



Concession paths or permissive paths

are marked with white arrows. These are routes that have been permitted at the discretion of the land owner.

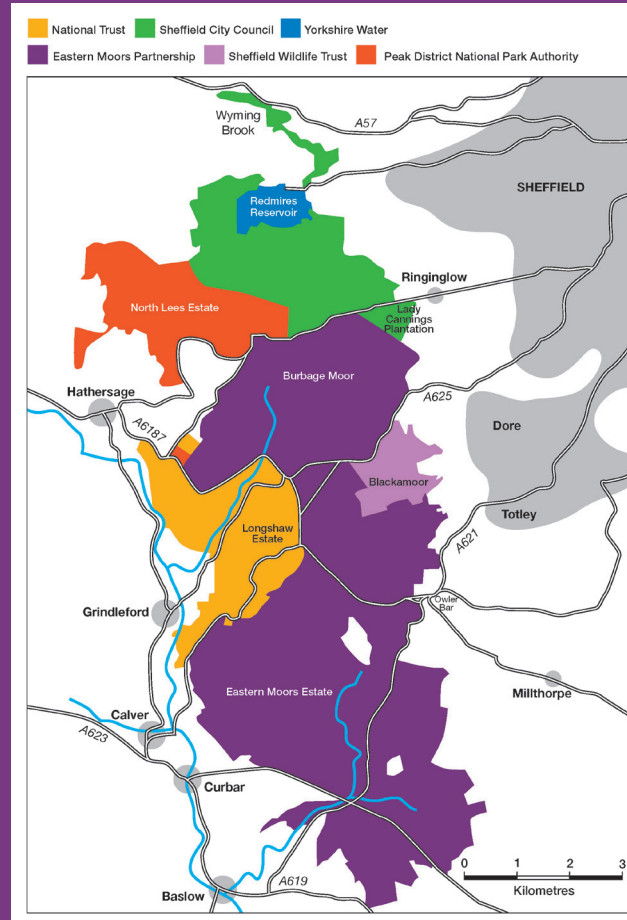
Open Access Land

The public has a right of access to approximately 500 sq km of Access Land in the Peak District National Park. Here you can roam at will without keeping to public paths.



The right of access is for those on foot only, for open-air recreation. Some activities are not included within this access right and are listed at www.gov.uk/right-of-way-open-access-land/use

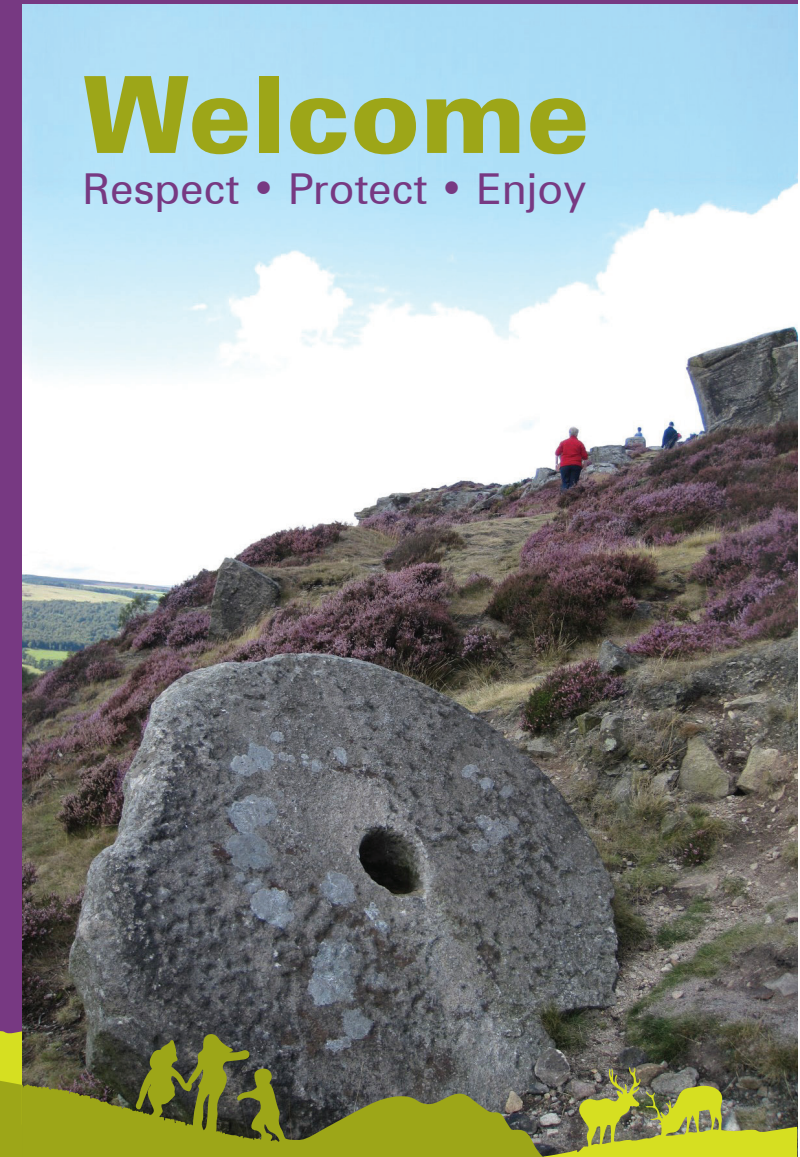
Map of the Sheffield Moors



Sheffield Moors User Guide

Welcome

Respect • Protect • Enjoy



The Sheffield Moors Partnership includes approximately 56 square kilometres of upland landscape in public sector or charitable ownership on the western edge of Sheffield. The area contains habitats of both national and international importance, providing some of the most popular destinations for outdoor recreation in the Peak District National Park.



Sheffield Moors
Partnership

Welcome to the Sheffield Moors

a special place for people and wildlife

Bridleways, footpaths and climbing edges within breath-taking scenery, enable us to share the Sheffield Moors with internationally important wildlife. Within this mosaic of precious habitats, please respect the wildlife that lives here, the landscape heritage, livestock and other visitors and local people. Help keep this special place special forever for everyone, by following the user guide.

- Avoid disrupting the site for locals, visitors and wildlife. Abide by the countryside code at all times.
- Drones or mechanised aircraft are not permitted anywhere on-site.
- Wildfires are a serious risk in the uplands. Open flames including BBQs, fireworks and camp-fires are strictly forbidden.
- Take home all litter, including food and dog waste. Bins are available at some car parks.
- Commercial activities, memorials and group events may require permission. Please check website before you proceed.

Please visit the website for more info:
www.sheffieldmoors.co.uk

Horse riding



- Please keep to the bridleways. Be aware that mounting blocks are not available at all access points.

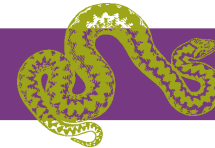
Walking with your dog



- From 1 March – 31 July wildlife and livestock are particularly vulnerable to disturbance. Dog walkers are welcome to enjoy the site, but during this period it is the law to keep your dog on a lead on open access land and at all times near livestock. If you feel you are at risk of being chased by cattle, let go of the lead.
- Dogs are expected to be under close control at all times of the year. Close control means within sight and returns on command regardless of distraction.
- Adders, a protected species, live on site. If your dog is bitten, keep them still and call the vet.
- Do not leave dog waste, even off main paths, bag it and bin it. Dog waste impacts on the environment, people and livestock.

Top tip: To find out more visit the *Take the Lead* pages at visit-eastern-moors.org.uk

Wildlife and photography



- Respect wildlife. Maintain a distance when watching or photographing and do not disrupt natural behaviour or damage habitats.
- Always follow the Nature Photographers Code of Practice available from the Royal Photography Society. *"The welfare of the subject is more important than the photograph."*
- From 1 March – 31 July wildlife and livestock are particularly vulnerable to disturbance.
- Avoid feeding bread and lunch scraps to wild birds and other wildlife as it can harm them.
- If you suspect a wildlife crime, call 999 for emergencies and 101 for your local wildlife crime officer.

Top tip: Enjoy the autumn spectacle of the red deer rut on Big Moor. Watch from a safe distance of at least 100m and avoid disturbance.

Mountain biking



- Check your route before you ride and stick to bridleways and byways. Keep single-track single.
- Avoid riding in large groups. Always slow down and say hello when approaching other visitors especially horse riders.
- Keep to existing tracks to protect surrounding habitats.

Top tip: Visit www.ridesheffield.org for info.

Walking and wild camping



- Leave gates as you find them and don't climb over stone walls which are ancient and easily damaged.
- Consider your impact and the ground conditions. Be prepared for changeable weather.
- Under the Open Access act there is no right to camp in the countryside other than within designated campsites.
- All waste including food waste and human waste must be removed and disposed of off site. Even biodegradable waste is slow to decompose in upland environments.

Top tip: Camping in the Peak District is available at Eric Byne and Stange campsites.

Climbing and bouldering



- Climbers have a great reputation for obeying seasonal restrictions. Occasional restrictions during bird nesting time are posted on the BMC's Regional Access Database (RAD), and are also signed on site. All breeding birds, their nests and eggs are protected by law.
- Dogs should always be tethered whilst you are climbing, bouldering or belaying.

Top tip: Visit www.thebmc.co.uk for info.